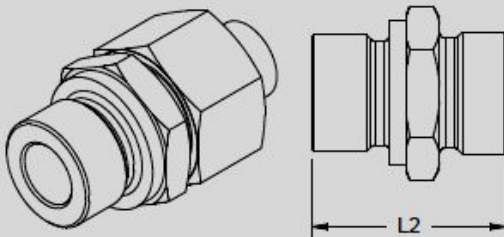
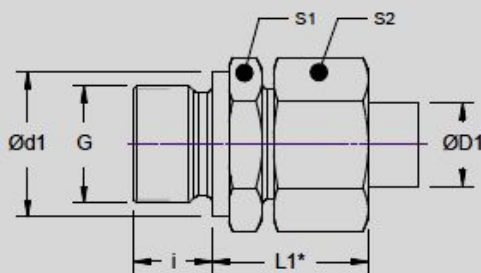


® KAVAATA HYDRAULIC FITTINGS

MALE STUD COUPLING (BSP)



Series	TUBE OD (ØD1)	G Male BSP Thread (G)	i	Ød1	S1	L1*	S2	L2
Light (L) 250 Bar	6	G 1/8"	8	14	14	24	14	23.5
	8	G 1/4"	12	18	19	25	17	29
	8	G 3/8"	12	22	22	26.5	17	30.5
	10	G 1/4"	12	18	19	26.5	19	30
	10	G 3/8"	12	22	22	28	19	31.5
	12	G 1/4"	12	18	19	27	22	31
	12	G 3/8"	12	22	22	27.5	22	31.5
	12	G 1/2"	14	26	27	28	22	34
Heavy (S) 630 Bar	15	G 1/2"	14	26	27	30	27	35
	6	G 1/4"	12	18	19	28.5	17	32
	8	G 1/4"	12	18	19	30	19	34
	10	G 3/8"	12	22	22	32	22	34.5
	12	G 3/8"	12	22	22	33.5	24	36.5
	12	G 1/2"	14	26	27	34	24	39

* DIMENSIONS GIVEN ARE APPROX FIGURES WITH TIGHTENED NUT

MANUFACTURER'S ADDRESS:

RAJEEV & COMPANY

Head Office : 423, Nazar Camp Cross 3, Main Road, Vadgaon, Belgaum-590005, Karnataka, India

Factory Address : 103/3, Dewarwadi Village, Chandgad Taluk, Kolhapur Dist, Maharashtra - 416507, India

Phone : 0831-2482327/ 2484635 | **Mob.:** 9243210643 / 9243222573 / 9234220173 | **Fax :** 0831-2481752

E-mail : sales@kavaatavalves.com

Website: www.kavaatavalves.com